

VAN ALLEN FOUNDATION UNIVERSITY SPACE CENTER OF MONTPELLIER

**CONTRIBUTING
TO THE RISE OF
NANOSATELLITES
IN FRANCE** **TRAINING
TOMORROW'S YOUNG
SPACE
TALENT**



« Since 2012, the Van Allen Foundation has been supporting the development of the Montpellier University Space Center. More than €2.8 million have been invested in the training of future space engineers, in technological innovation projects, and in the promotion and development of professional network in the field of nanosatellites. We would like to thank all the founding members, donors and project collaborators for their support and their involvement. None of this would be possible without them. »

Jean Claude GAYSSOT,
President of the Van Allen Foundation

STUDENTS

370 Welcomed to the CSUM



200

With grants from
the FVA

90%

Employability of students
at the end of their
curriculums



500K€
FVA budget/year

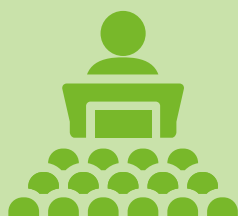


+ 2.8

Million euros invested in
education and projects

7

Public
conferences
and technical
workshops



6

Nanosatellites



« Astronaut Thomas Pesquet presented the MTCube nanosatellite at the Paris International Air Show 2019 »

THE VAN ALLEN FOUNDATION

The Van Allen Foundation (FVA) is a partnership foundation of the University of Montpellier which provides strategic and financial support to the University Space Center of Montpellier (CSUM).

At CSUM students train on the different aspects of space jobs through the development of nanosatellites during their study projects and internships.

OUR ACTIONS



CSUM nanosatellites projects funding.



Equipments, internships, theses and management staff funding.



Organization of public conferences, technical workshops, promoting and managing the Van Allen Foundation Partner's Club and the Friends of the Van Allen Foundation.

THE GOVERNANCE



Jean-Claude GAYSSOT
President of FVA,
former minister



Philippe AUGÉ
President of the University
of Montpellier



Claudie HAIGNERÉ
Sponsor of FVA,
former astronaut



Laurent DUSSEAU
Director of FVA
and CSUM

Our founding industrial members



Pierre MAURICE
CEO
3D PLUS



Arnaud DE ROSNAY
Space Systems Engineering
Director AIRBUS
DEFENCE & SPACE



Madhana KUMAR
Chief Transformation
& Strategy Officer
EXPLO



Nicolas WUYAM
Space Affairs Director
LATECOERE

OUR PROJECTS



Nanosatellites provide a low cost and fast solution to test new technologies.

They facilitate access to space and pave way for new, innovative applications.

Learn more:

<https://csu.edu.umontpellier.fr>



**Planned
launch in 2021**

MTCube-2 et CELESTA

Ready for launch on
VEGA-C.
First nanosatellites
in MEO



**Planned launch
end of 2021**

**ROBUSTA 3A
MEDITERRANÉE**



July 5 2019

MTCube



June 23 2017

ROBUSTA 1B



February 13 2012

ROBUSTA 1A

First french
nanosatellite in orbit

In the South-East of French Mediterranean shore, the heavy rainfall called "épisodes cévenols" are caused by the accumulation of humidity at sea.

Observations that provide a better understanding of the humidity levels over the Mediterranean can potentially contribute to improved forecasting of intense rainfall.

CSUM is building ROBUSTA 3A MEDITERRANÉE and collaborates with prestigious partners – METEO FRANCE – IGN – ENSTA BRETAGNE – PORT DE SETE SUD DE FRANCE – to develop a mission that tackles this issue.

OUR STRENGTHS



1. MADE IN FRANCE TECHNOLOGIES designed at CSUM

2. EXPERTISE of the University of Montpellier in the field of radiation

3. 15 YEARS OF EXPERIENCE in nanosatellite development

4. LEADERSHIP AND COORDINATION

5. ACTIVE NETWORK consisting of industrial groups, SMEs and academics

6. STRONGLY INVOLVED in the issue of space debris and the sustainable use of space

7. PRO-ACTIVE in the definition of good practices related to the FSOA (French Space Operations Act)

8. DEDICATED BUILDING with state-of-the-art equipment

THE MONTPELLIER UNIVERSITY SPACE CENTER

Since 2006, the CSUM has been developing nanosatellites by involving students during their internships and their study projects.

Supervision is provided by CSUM engineers, academics and industrials.

1

Concurrent Design Facility

A collaborative work tool that simulates all aspects of a mission to evaluate its feasibility

2

Mission control center

Monitoring the evolution of the missions in real time

3

Ground stations (S-band and UHF)

Communication with satellites by radio frequency link

4

Clean room

Controlled environment for integration of nanosatellites. Welcomes students from partner's educations to train them in AIT (Assembly, Integration and Tests)

5

Thermal vacuum chamber (TVAC)

Optimized for testing nanosatellites

ACTIVITIES CENTERED UPON NANO-SATELLITES PLATFORMS AND SYSTEMS

With its own 1U and 3U platforms, the Space Center offers the possibility for end users to design complete missions, embark payloads or perform technological validation in orbit.

The CSUM offers turnkey solutions from feasibility study to satellite operation. For collaborative projects, with other CSUs, it conducts upstream studies on 6U and 12U projects.

INNOVATIVE TRAINING COURSES

Under CSUM impulse, two new university courses have been created:

1

A Bachelor degree program in Assembly, Integration and Tests (AIT), at the IUT of Nîmes

2

A Post-master's Professional degree in Space System Engineering (DSS), carried out by Polytech Montpellier, at the IUT of Nîmes

These courses are full time or work-study programs and serve as a basis for the training of managers, engineers and technicians of emerging countries wishing to initiate a space program.



HOW TO MAKE A DONATION?

MAKE A DONATION

From 1 €

Join the University Space Adventure

BECOMING A FRIEND OF THE FOUNDATION

From 1,000 €

*Do you dream of Space? Do you want to take part in the space adventure in our region?
Make your dream come true*



JOIN THE PARTNER'S CLUB

Membership amount depending on turnover

Join a privileged network of information and discussions about university nanosatellites

BECOMING A MAJOR DONOR

Consult us

BECOMING A FOUNDER MEMBER

Consult us

Be at the heart of decisions

Tax advantages

COMPANIES: 60% of the donation deducted from business tax (up to 0.5% of turnover excluding VAT) (jusqu'à 0,5% du CA HT)

INDIVIDUAL: 66% of the donation deducted from income tax

IFI : 75% of the donation deducted from property tax

CONTACT

Van Allen Foundation

+ 33 (0)4 67 14 49 91

fondationvanallen@umontpellier.fr

<https://fondationvanallen.edu.umontpellier.fr/en>

or

University Space Center of Montpellier

+33 (0)4 67 14 38 00

<https://csu.edu.umontpellier.fr/contact>

<https://csum.umontpellier.fr/en>

Université de Montpellier - Centre Spatial Universitaire

860 rue St Priest - Bât 6

34090 Montpellier - France